



File Name: crown ma5000i manual.pdf

Size: 1851 KB

Type: PDF, ePub, eBook

Category: Book

Uploaded: 6 May 2019, 18:48 PM

Rating: 4.6/5 from 753 votes.

Status: AVAILABLE

Last checked: 19 Minutes ago!

In order to read or download crown ma5000i manual ebook, you need to create a FREE account.

[**Download Now!**](#)

eBook includes PDF, ePub and Kindle version

[Register a free 1 month Trial Account.](#)

[Download as many books as you like \(Personal use\)](#)

[Cancel the membership at any time if not satisfied.](#)

[Join Over 80000 Happy Readers](#)

Book Descriptions:

We have made it easy for you to find a PDF Ebooks without any digging. And by having access to our ebooks online or by storing it on your computer, you have convenient answers with crown ma5000i manual . To get started finding crown ma5000i manual , you are right to find our website which has a comprehensive collection of manuals listed.

Our library is the biggest of these that have literally hundreds of thousands of different products represented.



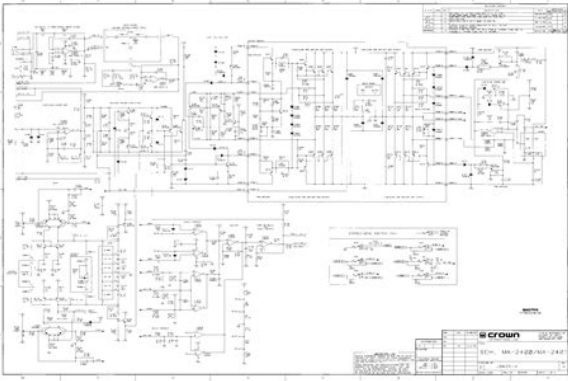
Book Descriptions:

crown ma5000i manual



September SaleSeptember SaleBe the first to know when more are listed Follow this Product Gallery Product Specs Brand Crown Model MacroTech 5000i 2Channel Power Amplifier Finish Silver and Black Year 2000s Categories Power Amplifiers Similar Products From the Price Guide Sell Yours Please check the fields highlighted in red.Currency. Please upgrade your browser or activate Google Chrome Frame to improve your experience. Covid19 Latest status update from Sound Technology Ltd. The series includes onboard analog signal processing and a built-in network connection. Recommended for Tour Sound. The series includes onboard analog signal processing and a built-in network connection. Recommended for Tour Sound. The series includes onboard analog signal processing and a built-in network connection. Recommended for Tour Sound. You can use this tool to change your cookie settings. Otherwise, we'll assume you're OK to continue. I'm fine with this Information and Settings Some of the cookies we use are essential for the site to work. Enable essential cookies We also use some nonessential cookies for web statistics purposes counting visits to our website. Enable statistics cookies To control thirdparty cookies, you can also adjust your browser settings. If you need assistance Nor does it cover However, updates to this information Other trademarks are the property of their Pour obtenir Andere Warenzeichen Tampoco cubre. Sin embargo, pueden Otras marcas Crown se evidence of damage for the shipper's inspection. transport. Crown sera ravi de vous aider en cas de besoin. Versandkarton zum Schadensbeweis auf. Conserve el Conservez le carton d'emballage comme preuve du dom. Esto se disponible chez Crown Audio Inc, afin de satisfaire les CAT5Kabel siebenmal durch einen Ferritkern Abbildung. Application Guide de Crown, disponible en ligne sur www.Repairs and replacement parts and all taxes, duties, and other customs fees. If a refund is elected, then you RESULTING FROM SUCH A DEFECT.<https://www.asie-voyages.com/documents/img/hoppecke-fnc-manual.xml>

- **crown ma-5000i manual, 1.0, crown ma-5000i manual.**



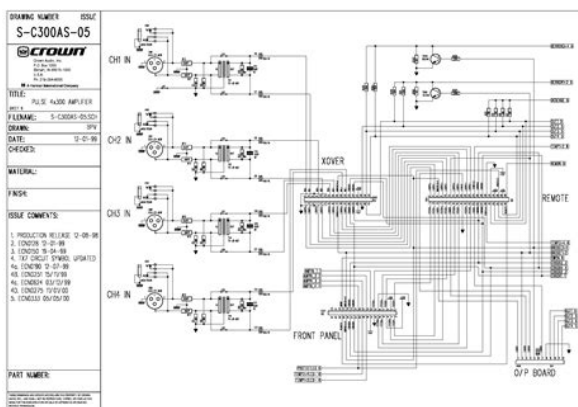
Le remboursement sera d'un montant ET RESULTANT D'UN TEL DEFAULT.Registrieren Sie sich jetzt. Please enable Javascript to implement all features of our website or call 8005222025 to place an order. You'll have full access to your order history and a personalized shopping experience. By continuing, you consent to our use of cookies in accordance with our cookie policy. Learn more Privacy Policy. The series includes onboard analog signal processing and a builtin network connection.The series includes onboard analog signal processing and a builtin network connection.By using our services, you agree to our use of cookies. For the best experience on our site, be sure to turn on Javascript in your browser.Well Ship It Fast! This item is currently out of stock. Most out of stock orders ship within just a few days excluding weekends and holidays. Well keep you up to date the whole way. Product Highlights ClassI Circuitry BuiltIn Monitoring Onboard Analog Signal Processing Standard Ethernet Networking Rugged Construction Global Power Supply The series includes onboard analog signal processing and a builtin network connection. Need to Price Match it. Click Here to see what we can do. The series includes onboard analog signal processing and a builtin network connection As a Trade site for those people who work in the Entertainment and Leisure Industry, our prices that you see are displayed with and without VAT. If you need assistance locating your local distributor, please contact Crown at 574 2948000. This manual does not include all of the details of design, production, or variations of the equipment. Nor does it cover every possible situation which may arise during installation, operation or maintenance. The information provided in this manual was deemed accurate as of the publication date. However, updates to this information may have occurred. To obtain the latest version of this manual, please visit the Crown website at www.crownaudio.com. <http://etbyggen.com/images/hopkins-split-image-transit-manual.xml>



Trademark Notice Crown, MacroTech, Crown Audio, and Amcron are registered trademarks; HiQnet is a trademark of Crown International. Other trademarks are the property of their respective owners. Later versions of this manual and additional information about this product may be available at the Crown website at www.crownaudio.com. Some models may be exported under the name Amcron Si vous avez besoin d'aide pour trouver votre distributeur local, veuillez contactez Crown au 574294 8000. Ce manuel ne comprend pas tous les details de conception, production ou variation de

l'équipement. Il ne couvre pas non plus toutes les situations possibles pouvant survenir durant l'installation, l'utilisation ou la maintenance. Les informations fournies dans ce manuel ont été estimées exactes à la date de publication. Toutefois, des mises à jour de ces informations peuvent avoir été faites. Pour obtenir la dernière version de ce manuel, veuillez visiter le site web Crown www.crownaudio.com. Note relative aux marques commerciales Crown, MacroTech, Crown Audio et Amcron sont des marques déposées; HiQnet est un marque de Crown International. Les autres marques commerciales sont la propriété de leurs détenteurs respectifs. Certains modèles peuvent être exportés sous le nom Amcron Si necesita asistencia para localizar a su distribuidor local, favor de contactar a Crown al 5742948000. Este manual no incluye todos los detalles de diseño, producción, o variaciones del equipo. Tampoco cubre cualquier posible situación que pueda surgir durante la instalación, operación o mantenimiento. La información provista en este manual fue considerada precisa a la fecha de publicación. Sin embargo, pueden haber ocurrido actualizaciones a esta información. Para obtener la última versión de este manual, por favor visite la página de internet de Crown en www.crownaudio.com.

Nota de Marcas Registradas Crown, MacroTech, Crown Audio, y Amcron son marcas registradas; HiQnet es una marca comercial de Crown International. Otras marcas son de la propiedad de sus respectivos dueños. Algunos modelos pueden ser exportados bajo el nombre de Amcron. Please check your inbox, and if you can't find it, check your spam folder to make sure it didn't end up there. Please also check your spam folder. If you need assistance locating your local distributor, please contact Crown at 574 2948000. Nor does it cover every possible situation which may arise during installation, operation or maintenance. However, updates to this information may have occurred. To obtain the latest version of this manual, please visit the Crown website at www.crownaudio.com. Other trademarks are the property of their respective owners. Si vous avez besoin d'aide pour trouver votre distributeur local, veuillez contactez Crown au 574294 8000. Il ne couvre pas non plus toutes les situations possibles pouvant survenir durant l'installation, l'utilisation ou la maintenance. Toutefois, des mises à jour de ces informations peuvent avoir été faites. Pour obtenir la dernière version de ce manuel, veuillez visiter le site web Crown www.crownaudio.com. Les autres marques commerciales sont la propriété de leurs détenteurs respectifs. Si necesita asistencia para localizar a su distribuidor local, favor de contactar a Crown al 5742948000. Tampoco cubre cualquier posible situación que pueda surgir durante la instalación, operación o mantenimiento. Sin embargo, pueden haber ocurrido actualizaciones a esta información. Para obtener la última versión de este manual, por favor visite la página de internet de Crown en www.crownaudio.com. Otras marcas son de la propiedad de sus respectivos dueños. They must be treated with respect and correctly installed if they are to provide the many years of reliable service for which they were designed.



Les series incluent un traitement de signal analogique embarque et une connexion de reseau

integree. Ils doivent etre traites avec respect et correctement installes pour fournir les nombreuses annees de service. Deben ser tratados adecuadamente e instalados correctamente si se desea que provean los muchos anos de servicio e ciento para los que fueron disenados. For additional information, please consult Crown's Ampli. Also, for your protection, please send in your warranty registration card today. And save your bill of sale — it's your of. Il ne couvre pas tous les aspects de l'installation, de la con. Pour des informations supplementaires, veuillez consulter l'Ampli. De plus, pour votre protection, veuillez envoyer votre carte d'enregistrement de garantie aujourd'hui. Para informacion adicional, favor de consultar La Guia de Aplicacion de Amplificadores de Crown disponible en linea en www.crownaudio.com o, contactar al soporte tecnico de Crown, a su instalador del sistema o a su tienda local. Le exhortamos a que lea todas las instrucciones, advertencias y precauciones contenidas en este manual. Tambien, para su proteccion, envienos su tarjeta de registro de garantia hoy mismo. Conserve su nota de venta es su comprobante de compra ocial. If damage is found, notify the transportation company immediately. Only you can initiate a claim for shipping damage. Crown will be happy to help as needed. Save the shipping carton as evidence of damage for the shipper's inspection. Si vous constatez un dommage, prevenez immediatement la societe de transport. Vous etes le seul a pouvoir déposer une reclamation pour un dommage de transport. Crown sera ravi de vous aider en cas de besoin. Conservez le carton d'emballage comme preuve du dommage pour l'inspection par le transporteur. N'expediez jamais l'unite sans son emballage d'usine. Si encuentra algun dano, noti. Solamente usted podra iniciar una reclamation por danos durante el envio. Crown se complacera en brindar la ayuda necesaria.

<https://laurenmitchellband.com/images/computer-networks-tanenbaum-5th-edition-solution-manual-pdf.pdf>



Conserve el empaque de envio como prueba del dano para la inspeccion del remitente. Nunca envíe la unidad sin el empaque de fabrica. See Figure 2.1 for ampli er dimensions. You may also stack amps without using a cabinet. NOTE When transporting, amplifiers should be supported at both front and back. Because this ampli er has a high power density, it has a strong magnetic. The eld is strongest on the right side and right bottom of the amplifier facing the amplifier. Voir Figure 2.1 pour les dimensions de l'amplificateur. Lors du transport, les ampli. En raison de la densite de puissance elevee de cet ampli. Le champ est plus fort sur le cote droit et sur la partie inferieure de l'amplificateur faisant face a l'amplificateur. Ya que este equipo posee una alta densidad de potencia, genera un poderoso campo magnetico que puede inducir zumbidos en dispositivos no aislados que se encuentren cerca. El campo magnetico mas potente se encuentra del lado derecho y en la parte baja derecha del ampli. Close any open spaces in rack with blank panels. DO NOT block front or rear air vents. The side walls of the rack should be a minimum of two inches 5.1 cm away from the amplifier sides, and the back of the rack should be a minimum of four inches 10.2 cm from the ampli. Les faces laterales du rack doivent etre a au moins 2" 5,1 cm des cotes de l'ampli. Las paredes laterales del gabinete deberan estar separadas de los costados de los amplificadores por lo menos dos pulgadas

5.1cm, y a parte posteriora del gabinete debe estar abierta. First, connect the IEC end of the cordset to the IEC connector on the amplifier; then, plug the other end of the cordset to the AC mains. Do not attempt to disable this ground connection by using an adapter or other methods. The AC mains voltage and current must be suf.If you are unsure of the output voltage of your AC mains, please consult your electrician. Stretch the ends of the clip and insert them into the slots Figure 2.3.

<http://www.learningbydoinglingue.com/images/computer-networks-tanenbaum-4th-edition-solutions-manual.pdf>



D'abord, connectez l'extremite CEI du cordon a l'embase CEI de l'ampli. Le témoin AC Mains de la facade doit s'allumer. N'essayez pas de le contourner en utilisant un adaptateur ou une autre methode. La tension et le courant du secteur doivent etre suf. Vous devez faire fonctionner votre amplicateur depuis une source electrique n'ayant pas plus de 10% de variation superieure ou 15% de variation inferieure a la tension speci. Etirez les extremités du clip et inserezles dans les fentes Figure 2.3. Primero, conecte el extremo IEC del cable al conector IEC del ampli. No intente deshabilitar esta conexion a tierra usando un adaptador o cualquier otro metodo. El voltaje y corriente del suministro electrico deben ser su. Debe operar su amplicador desde un suministro de energia con variaciones no mayores al 10% hacia arriba o 15% hacia abajo del voltaje de linea especificado para el ampli cador y dentro de los requerimientos de frecuencia speci. Abra los extremos del clip e insertelos en las ranuras Figura 2.3. The higher the density of the shield the outer conductor the better. Spiral wrapped shield is not recommended. Avoid lengths greater than 10 feet 3 meters. Crown is not liable for damage incurred when any transducer or component is overdriven. This is to ensure compliance with emission regulations. Plus la densite du blindage est elevee le conducteur exterior, meilleures sont les performances. Le blindage enrrole en spirale n'est pas recommande. Evitez des longueurs superieures a 3 metres. Crown n'est pas tenu responsable des degats occasionnes a la suite de la surcharge d'un transducteur ou d'un composant. No se recomienda el uso de blindaje envuelto en espiral. Evite el uso de cables de mas de 3 metros

10 pies de longitud. Esto minimiza la presencia de zumbidos y de induccion de ruidos hacia los cables de entrada. Crown no se hace responsable de danos por sobrecarga de cualquier transductor o componente.

Esto se efectua para cumplir los reglamentos sobre emisiones electromagneticas. Use 3pin male XLR connectors. Vous devez utiliser des connecteurs XLR males 3 broches pour le cable entrant dans Se le sugiere usar conectores XLR machos de 3 terminales para las entradas del amplificador. Tambien se pueden usar lineas desbalanceadas pero podrian generar ruido en tramos largos de cable. Use Class 2 output wiring. The side entry positions for these connectors should therefore be used. Inferior Conector Les positions d'entree lateral pour ces connecteurs doivent par consequent etre utilisees. Por lo tanto, deberan ser usadas las posiciones de entrada superior e inferior de estos conectores. Use Class 2 output wiring. Repeat Channel 2 wiring as for Channel 1. Utilisez une ligne de sortie de Classe 2. Effectuez le cablage du Canal 2 de la meme maniere que pour le Canal 1. Use cableado de salida Clase 2. Repita el proceso completo del Canal 1 para el Canal 2. Insert the Speakon cable connector into the ampli. Or see Section 3.5, G. There are two ways to wire the amplifier output connectors for Bridge Mono mode Set the limiter threshold so that mixer signals above 0 dB or 0 VU on the mixer meters do not quite drive the amplifier into clipping. To prevent subsonic signals, use one of these methods For example, try 35 Hz for music and 75 Hz for speech. On each mixer input channel, set the lter frequency just below the lowest fundamental frequency of that channel's instrument. The Power indicator should glow. Reglez le seuil du limiteur de telle sorte que les signaux de la console de mixage, superieurs a 0 dB ou 0 VU sur l'appareil de mesure de la console de mixage n'occasionnent pas l'ecretage de l'amplificateur. Pour eviter les signaux subsoniques, utilisez l'une des methodes suivantes Reglez le ltre sur la frequence la plus elevee possible sans qu'elle ne gene votre programme. Par exemple, essayez 35 Hz pour la musique et 75 Hz pour les discours.

<https://brothersaluminium.com/wp-content/plugins/formcraft/file-upload/server/content/files/16288341f8d85e---cameo-sundance-spa-manual.pdf>

Sur chaque canal d'entree de la console de mixage, reglez la frequence du ltre juste audessous de la frequence fondamentale la plus basse de Le temoin Power doit s'eclairer. Fije el umbral del limitador de tal forma que las senales de la mezcladora por encima de 0 dB o 0 VU mostradas en los medidores de la mezcladora no alcancen a hacer que el amplificador se sature. Para evitar las senales subsonicas, use uno de estos metodos Con gure el ltro a la mayor frecuencia posible que no afecte a su programa. Por ejemplo, intente con 35 Hz para la musica y 75 Hz para la voz. En cada canal de entrada de la mezcladora, congre la frecuencia del. If one channel experiences a failure, the entire amplifier will shut down, potentially saving your equipment. More Details Special Order Share Print Expected availability 710 business days Important Notice This item is noncancelable and nonreturnable. This item is not available for purchase online. Please call us at 800.606.6969, or visit our NY Superstore. The rugged chassis houses patented ClassI circuitry, which provides highquality audio and gets the most power out of the amplifier with minimal wasted energy. If one channel experiences a failure, the entire amplifier will shut down, potentially saving your equipment. An Ethernet port lets you connect the amplifier to a network, allowing you to monitor and control the amp from any location. A global power supply and 5 different power cords make sure youre connected, regardless of where youre working. The front panel features individual gain controls for each channel with lighted level indicators. LED lights show the status of Power, Ready, and Signal, and also indicate when youre in bridge mode or connected to a network. Variablespeed fans with fronttoback airflow keep internal components cool for rocksolid reliability. HighQuality Audio The MA5000i is designed to provide sonic accuracy with terrific detail.

If either channel has a catastrophic failure, the entire amplifier shuts down to protect the system. Let us know YOUR RECENTLY VIEWED ITEMS Browsing History ON Clear History Not responsible

for typographical or illustrative errors. If you have lost or thrown out the CD with the Crown Audio manual and you need advice with settings, error messages or are just interested in the capabilities and different functions of your Crown Audio, then you can download a user manual from the Crown Audio website. If the manufacturer's website does not give instructions on where to download a Crown Audio user manual, then you will find plenty of Crown Audio fans in our database. Take a look at our discussion forum for your particular product, a more experienced Crown Audio user will surely be able to help you with the settings. We're trying to help you find exactly what you're looking for to keep you coming back. The XTi 2002 offers highly accurate. The amplifier has a 1RU chassis, allowing you to install it in any standard. It features independent selection of high and low impedance operation for a specific channel, plus power. The XTi 4002 offers highly accurate. The XTi 1002 offers highly accurate. The XTi 6002 offers highly accurate. The supercardioid polar pattern provides a highly directional pick up, minimizing noise and ambient. The amplifier has a 1RU chassis, allowing you to install it in any standard. The amplifier has a 1RU chassis, allowing you to install it in any standard. The amplifier uses DriveCore technology, a propriety. The rugged chassis houses patented Class I circuitry, which provides high quality audio and gets the most power out of the. The supercardioid polar pattern provides a highly directional pick up, minimizing noise and ambient at the. Try Google Search!

Headphones Peavey PV 6 BT Mixing Console with Bluetooth 03612590 Posted by Rachel Woodruff 20200906 192212 I bought this unit to play my electric guitar through while my iPad is connected. Why can't I hear my guitar through the headphones yet I can hear my iPad music. Toyo Hood ToyoView 4x5 Binocular Reflex Hood 180812 Posted by Mark Faram 20200905 180346 Need a manual for the 45r. Leupold GR 1240 Spotting scope Leupold GR 1240x60 Spotting Scope 120371 Posted by Bob Marshall 20200905 044747 Please send me the user's manual. Is there a trick. We should do this for several simple reasons. First of all, view the first pages of the manual, you can find above. You should find there the most important technical data. Crown Audio MA5000i thus you can check whether the hardware meets your expectations. When delving into next pages of the user manual, Crown Audio MA5000i you will learn all the available features of the product, as well as information on its operation. The information that you get Crown Audio MA5000i will certainly help you make a decision on the purchase. You will learn then if you properly used the available features, and whether you have not made any mistakes, which can shorten the lifetime Crown Audio MA5000i. Almost always you will find there Troubleshooting, which are the most frequently occurring failures and malfunctions of the device Crown Audio MA5000i along with tips on how to solve them. Sounds Cool Live Audio LLC www.soundscolliveaudio.com www.broawaymusicinc.com 219 7127086 Shipping will commence in May sometime. Orders are being taken now. I've already got my order ready. John has a good point. But you have to admit if your buying product from a stupid salesman at guitar center chances are your just as stupid for shopping there. If Crown gets more sales because of stupidity then I call that good marketing strategy on their part. Besides Guitar Center doesn't have any business with an amp of this magnitude. Leave it for the Professionals!!!

GC needs to stick to Behringer, and Phonic. Well not to defend GC but there are many of us who have well established professional relationships with people at GC who actually know what they're doing and know the products they're selling. And believe it or not the GCs in the Boston area have dedicated rooms for pro sound with racks full of high end equipment and people selling it who know what it's for. And that's a bonus because I really don't have to depend on a sales person to make choices for me. So I'll go there if the price is right just like you. I would never go there. I have my own retail store. GC does nothing but try and drive the small business owner out of business. I know this because I had one move in about 2 miles from my store. I recently read an article that stated GC MUST open a new store every six months or they will go bankrupt because their stores only gross profit when they are new to the area. The newness wears off and people stop going there. And it's a good thing that Bain Capital bought them because they have stopped the new store openings, and

now are getting ready to weed out the stores that do not gross any profit. Which could mean the end of GC is in the near future. Which would be the best thing that could happen to the industry in years. If you want good prices call me. I'll stand behind the products I sell and service them for you. I will meet or beat a GC price any day of the week. And I will always beat their service. Brian, I fully understand your position, and I've visited your web site, a good indication that you run a first class business, offer good service and a good product and for that you can be commended. The problem I've seen in this area is not that GC undercuts the local smaller retailers, but that a number of the smaller retailers don't come through as often promised. I would say that you are an exception to that rule, so I'll be more specific.

For the majority of my real pro sound needs I'll call or go to Pro Sound Service and speak to Charlie Tappa. He gets first shot at anything I need in that department. However, if I need something immediately and Charlie doesn't have it, then I'll go to other sources, and GC is a source, nothing more. As I have said I have some contacts like everyone else. One of those contacts on a local level is a fine gentleman who owns a very well respected music store very close to my home. In the past I have spent many thousands of dollars at his store, and even went out of my way to get his son a very good paying job, which he still holds. He has let all of his best authorizations fail because he is unwilling to compete and bases all of his retail prices on what he feels are a combination of actual cost plus a markup for his service. He fully believes he is a true VAR, which he is not. He is currently selling only the cheapest lines of audio and musical hardware and instruments. I still stop by from time to time, his son still has the job I gave him, and I still give him a shot at my instrument purchases, but every time I stop by I feel as though I'm being raped. I may go through 1520 sets of strings in a month between myself and my rhythm player. I don't think so, and my stops at the store are fewer and more far between. On the flip side I have a very good contact at a GC in tax free New Hampshire. So two years ago my wife and daughters surprised me with a trip to the store for father's day. When I got there the manager took me out back to look at pictures of every Les Paul historic that was available in 152 stores nationwide. I picked the guitar I wanted, forked over the money and they flew the guitar in for me within 24 hours. When I ordered JBL 2242s and SRX722s from Charlie Tappa he beat the GC price like it was a red headed step child, we met, we talked, and I can't praise Charlie and his crew enough. So my retirement plans include a small line array.

Who will I go to Charlie Tappa, the guy who did the Tweeter Center and gave me the great pricing backed by years of knowledge. However, one caveat. I'll price through other sources, then go to Charlie. If his pricing is within reason, close or he beats the other quotes he gets the sale. If I can save a good chunk of change someplace else then it becomes a question in my mind. As far as these amps are concerned I know Charlie Tappa can beat just about anyone's price, he's local, he's a pro, and he's a great guy. Amps are commodities, the warranty is the same regardless of where purchased Authorized, and I really don't need a VAR to steer me in the right direction. Just trying to explain my position. As it seems there is no clear cut street price on big boy Crown amps. As it seems there is no clear cut street price on big boy Crown amps. And it was AStock. The Macrotech 12000 manual isn't available as of yet. However the spec sheet gives me enough information to keep me interested. Looks like I will be getting one 12000 in the near future and, add more if they perform as the original MA Series. Best Regards, As with the days of buying gear from actual stores that had a customer service staff on the selling floor, you need to shop around. There are plenty of Online stores that offer astronomical prices and, there are some that offer very reasonable prices. If you are technically inclined, you can actually buy a used 5002, download Crown's Service Manual and Troubleshoot the amplifier yourself to make sure it's working properly. Especially when it is no longer Crown's Top Of the Line anymore. But alas, Spring is near and the prices reflect the demand of powerful amps needed in the months ahead. Best Regards, Pricing !!! Pricing !!! The wattages are the same as the iTechs, the back looks the same, the front air vent is the same. Crown took a beating with the rep of the iTech and thinks this will save their ass.

Crown should have released a 4 channel amp and doubled the warranty to be competitive with Lab Gruppen who is kicking butt!. I think Crowns reputation isnt like it was 510 yrs ago, but they must think they are still on top and can do what they want. Well good luck! Lab, Camco and QSC have some REALLY good amps and it seems like Crown took a step backwards with this amp. The funny thing is they slapped the MacroTech name on it just to get people to buy into it. Why not slap the iTech name on it lol, I guess they are not complete idiots, they know the iTechs are ticking time bombs. Oh, and to release an anniversary model of the MacroTech and charge WAY too much for old technology is just plain stupid. Perhaps Crown should give a little something to their customers like a good warranty. If the best amp they make itech breaks, REPLACE IT.They should perfect their products BEFORE releasing them on the market. They say the iTech is stable, well I know it is better, but nowhere near rock solid stable such as QSC and LAB. I also have not heard them admit to the XTis failing.It will be interesting to see how this amp does on the market. Will it be the next MacroTech I do not think so. Im not sure of the pricing, but it better be less then the Labs Pricing !!! The ITech you did not want to try and mix into other inventory. These new ones have a led readout that goes around the volume controls. This can function 2 ways either as a led indication of the gain setting, or as an input level meter. The level meter shows both Vu balastics and Peak simultaneously. Nice to have instead of just the IOC lights. The are still networkable for gain, limiter the same rms or peak voltage as the Itechsand performance monitoring clip, temp, etc and I believe can log this data when on network. As I understand the ultrasonic filtering that keeps the switching noise out has been improved over the Itechs. I other words should have improved hi end response.